

124°22'30"E 124°25'00"E 124°27'30"E 124°30'00"E 124°32'30"E 124°35'00"E

10°05'00"N
10°02'30"N
10°00'00"N
9°57'30"N
9°55'00"N

124°22'30"E 124°25'00"E 124°27'30"E 124°30'00"E 124°32'30"E 124°35'00"E



Republic of the Philippines
PROVINCE OF BOHOL
City of Tagbilaran



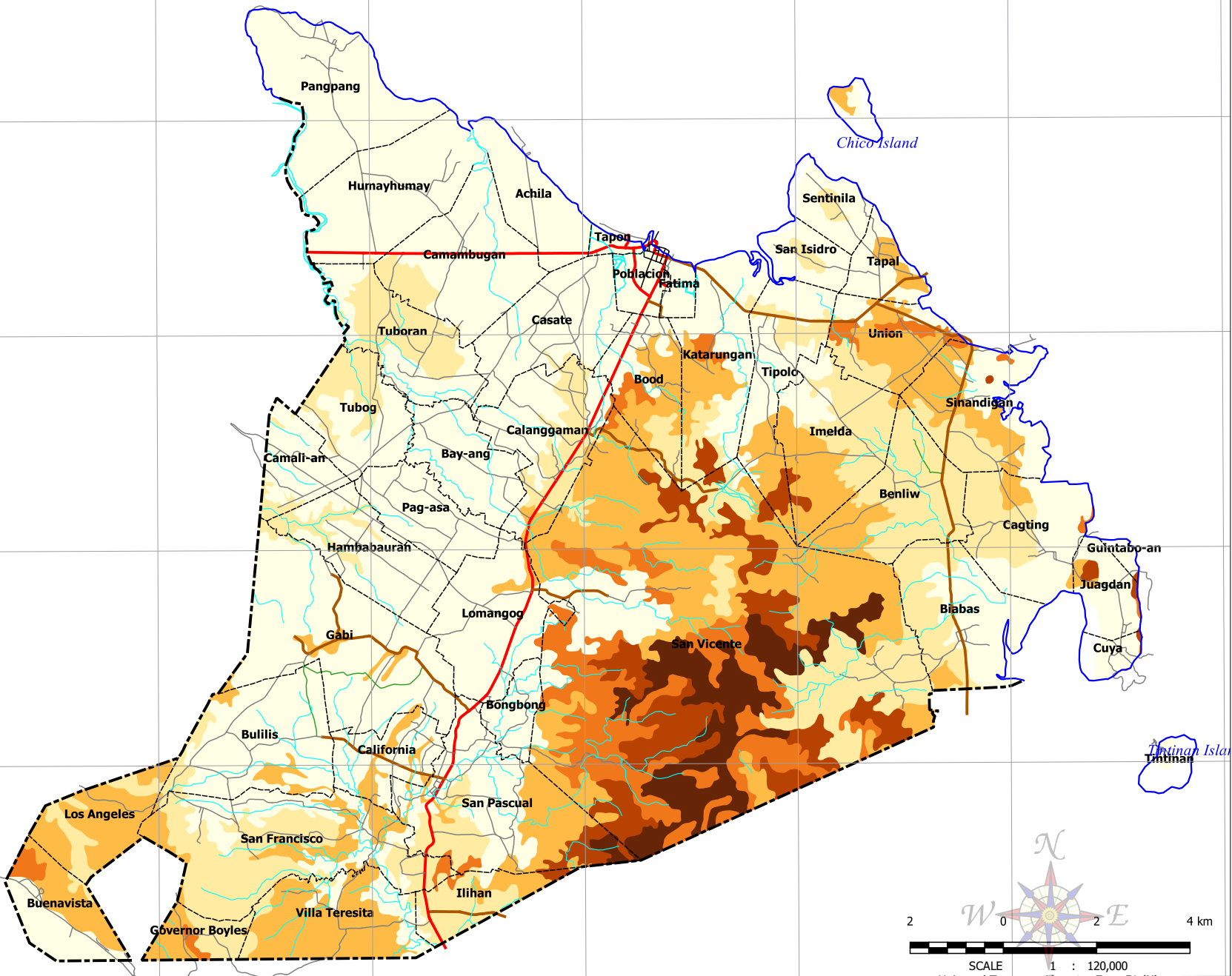
PROVINCIAL PLANNING & DEVELOPMENT OFFICE

SLOPE MAP

Municipality of UBAY

LEGEND

- Coastline
 - Municipal Boundary
 - Barangay Boundary
 - Rivers and Creeks
 - National Road
 - Provincial Road
 - Municipal Road
 - Barangay Road
 - Farm-to-Market Road
- Slope
- Up to 3%
 - 3 to 8%
 - 8 to 18%
 - 18 to 30%
 - 30 to 50%
 - over 50%



2 0 2 4 km

SCALE 1 : 120,000
Universal Transverse Mercator-Zone 51 (N)
World Geodetic 1984 (WGS84)

NOTES:
1. Coastline, boundaries, rivers and creeks based on Ubay CLUP 2003-2012.
2. Roads based on the Municipal Roads Database acquired through CRID project
3. Slope digitized by PPDO GIS-Unit from Slope Map of Bureau of Soils and Water Management(BSWM)
4. This map is not authoritative, not verified and to be used for indicative purposes only